

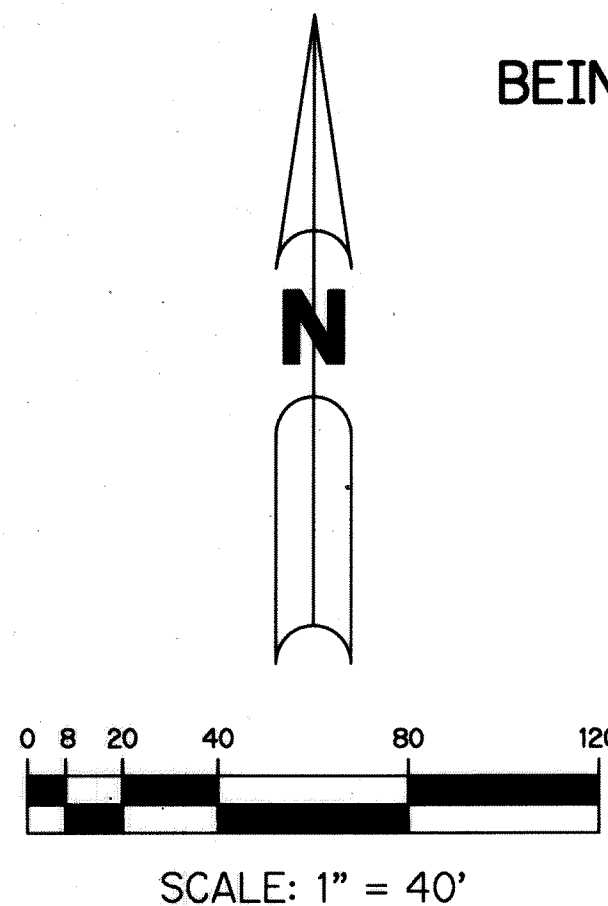
SUSSMAN AGR-PUD NORTH PLAT ONE

BEING A REPLAT OF A PORTION OF TRACTS 17, 22 THROUGH 24, 41 THROUGH 46, 48, 49, 51, 52 AND 54 THROUGH 56 AND ALL OF TRACTS 18 THROUGH 21, 47, AND 50, ALL IN SECTION 19, TOWNSHIP 46 SOUTH, RANGE 42 EAST, PALM BEACH FARMS COMPANY PLAT NO. 1, ACCORDING TO THE PLAT THEREOF, RECORDED IN PLAT BOOK 2, PAGE 26 OF THE PUBLIC RECORDS OF PALM BEACH COUNTY, FLORIDA.

SHEET 2 OF 18

176

THIS INSTRUMENT WAS PREPARED BY
PERRY C. WHITE, P.S.M. 4213, STATE OF FLORIDA
SAND & HILLS SURVEYING, INC.
8461 LAKE WORTH ROAD, SUITE 410
LAKE WORTH, FLORIDA 33467
LB-7741

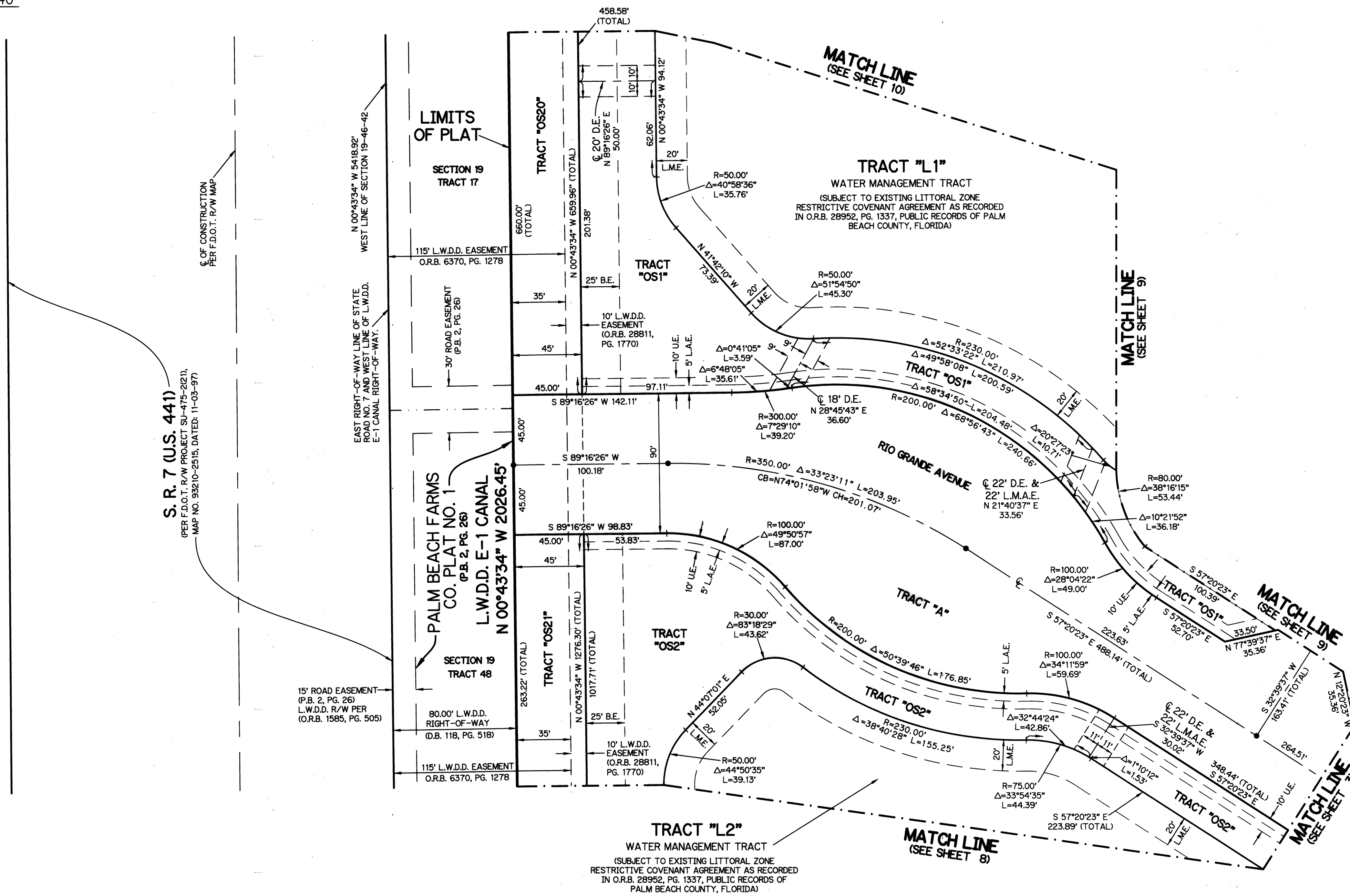


LEGEND:

- - SET PERMANENT REFERENCE MONUMENT
4"x4" CONCRETE MONUMENT WITH
1.5" DISK STAMPED L.B. #7741
- - FOUND PERMANENT REFERENCE MONUMENT
4"x4" CONCRETE MONUMENT WITH
1.5" DISK STAMPED L.B. #7741
- - SET PERMANENT CONTROL POINT
NAIL WITH 1.25" DISK STAMPED L.B. #7741
- - FOUND PERMANENT CONTROL POINT
NAIL WITH 1.25" DISK STAMPED L.B. #7741
- AGR - AGRICULTURAL
- Δ - DELTA ANGLE
- B.E. - BUFFER EASEMENT
- CB - CHORD BEARING
- CH - CHORD DISTANCE
- CL - CENTERLINE
- D.B. - DEED BOOK
- D.E. - PRIVATE DRAINAGE EASEMENT
- F.P.L. - FLORIDA POWER & LIGHT
- L - ARC LENGTH
- L.A.E. - LIMITED ACCESS EASEMENT
- L.M.A.E. - LAKE MAINTENANCE ACCESS EASEMENT
- L.M.E. - LAKE MAINTENANCE EASEMENT
- L.W.D.D. - LAKE WORTH DRAINAGE DISTRICT
- NR - NOT RADIAL
- N.T.S. - NOT TO SCALE
- O.R.B. - OFFICIAL RECORD BOOK
- O.E. - MAINTENANCE & ROOF OVERHANG EASEMENT
- P.B.C.U.E. - PALM BEACH COUNTY UTILITY EASEMENT
- P.B. - PLAT BOOK
- P.C.P. - PERMANENT CONTROL POINT
- P.D.E. - PUBLIC DRAINAGE EASEMENT
- PGS. - PAGES
- P.O.B. - POINT OF BEGINNING
- P.O.C. - POINT OF COMMENCEMENT
- P.S.M. - PROFESSIONAL SURVEYOR AND MAPPER
- P.U.D. - PLANNED UNIT DEVELOPMENT
- R - RADIUS
- RAD - RADIAL
- R/W - RIGHT-OF-WAY
- R.D. & D. - ROAD, DYKE AND DITCH RESERVATION
- S.T. - SURVEY TIE
- U.E. - UTILITY EASEMENT

NOTE:

COORDINATES SHOWN ARE GRID COORDINATES DATUM = NAD 83 (1990 ADJUSTMENT)
 ZONE = FLORIDA EAST ZONE
 LINEAR UNIT = U.S. SURVEY FEET
 COORDINATE SYSTEM = 1983 STATE PLANE TRANSVERSE MERCATOR PROJECTION
 ALL DISTANCES ARE GROUND
 SCALE FACTOR = 1.000190
 PLAT BEARING = GRID BEARING
 GROUND DISTANCE X SCALE FACTOR = GRID DISTANCE



S. R. 7 (U.S. 441)

(PER F.D.O.C. PLAN PROJECT S.U. 475-2921, MAP NO. 93210-2515, DATED: 11-03-97)

1/4 OF CONSTRUCTION PER F.D.O.T. R/W MAP

15' ROAD EASEMENT (P.B. 2, PG. 26) L.W.D.D. R/W PER (O.R.B. 1585, PG. 505)

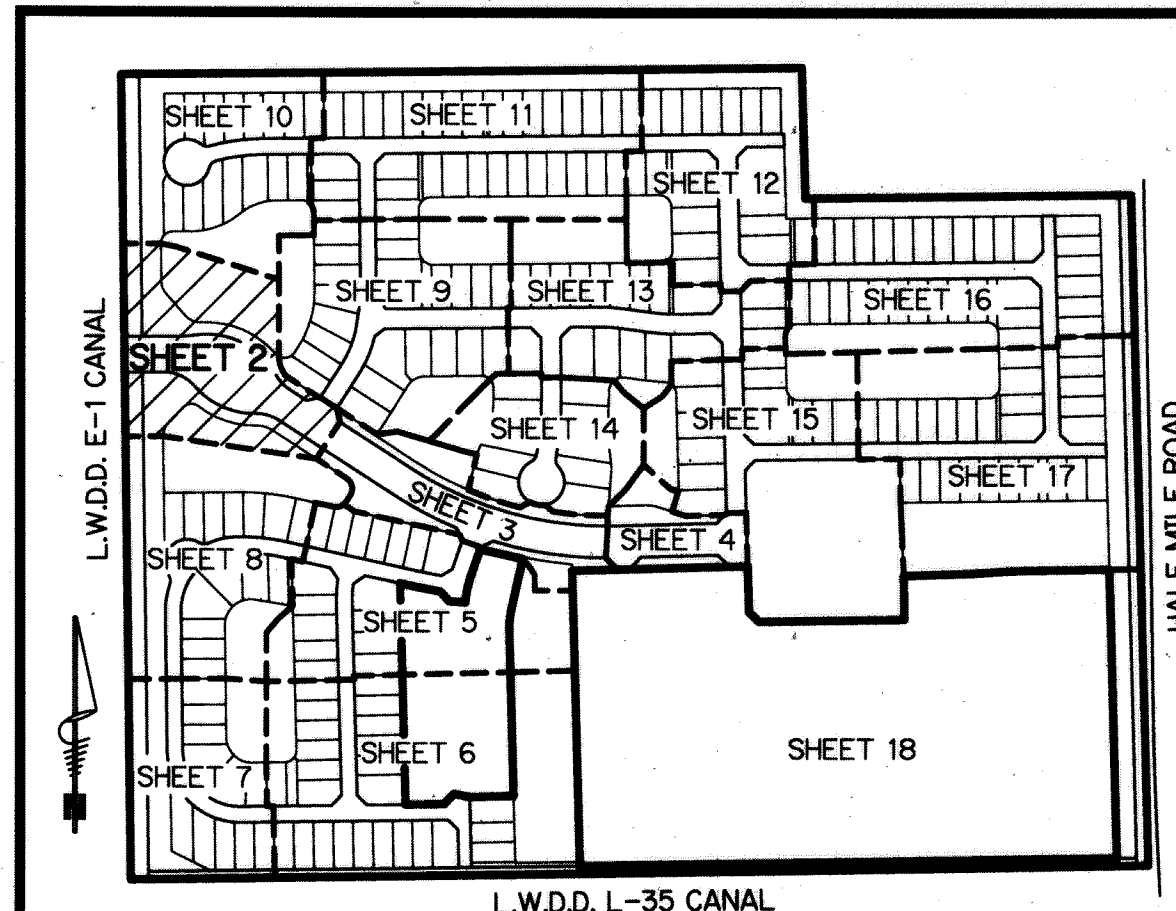
EAST RIGHT-OF-WAY LINE OF STATE ROAD NO. 7 AND WEST LINE OF L.W.D.D. E-1 CANAL RIGHT-OF-WAY.

115' L.W.D.D. EASEMENT (O.R.B. 6370, PG. 1278)

30' ROAD EASEMENT (P.B. 2, PG. 26)

80.00' L.W.D.D. RIGHT-OF-WAY (D.B. 118, PG. 518)

115' L.W.D.D. EASEMENT (O.R.B. 6370, PG. 1278)



KEY MAP
N.T.S.